

TYPES OF WINDOWS

WINDOW

- An opening in wall made for providing day light, vision and ventilation
- Construction or production of window is same as doors

Ventilator frame



Wooden window



UPVC Window

(Unplasticized Polyvinyl Chloride)



STEEL WINDOW

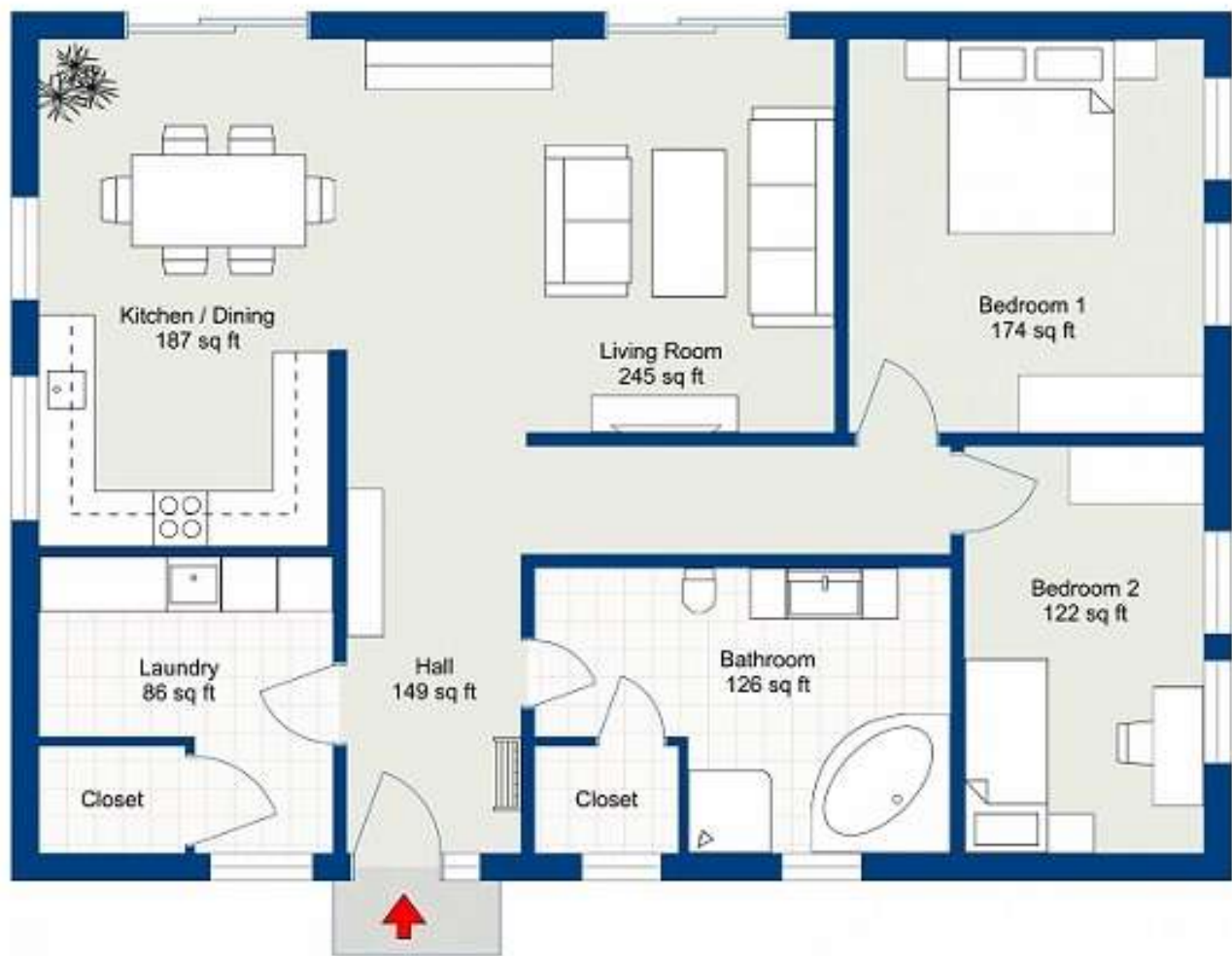


WINDOW WITH SAFETY GRILL



THUMB RULE

- AREA(WALL AREA)
OF WINDOW OPENING = 10 to 20% of floor area
case i) 10 to 15% for pure hot regions
case ii) 15 to 20% for hot and also humid regions
- In public buildings
(schools, offices, factories, hospitals) = 20% of floor area
- Total area of glass
panels in windows = 8% of floor area



First Floor
22 Seaview

Whilst every attempt has been made to ensure the accuracy of the floor plan, all measurements, fixed installations and furnishings are for illustrative purposes only and should be used as such by any prospective purchaser.

Types of Windows!



XOX Horizontal Slider



XX Horizontal Slider



Fixed Window



French Door



Tradewind Door



X Casement



Single French Door



XX Casement



Bermuda Door



Sliding Glass Door

Pivoted window



CASEMENT WINDOW



SASH WINDOW



LOUVERED AND VENTIANED WINDOW



VENTILATOR



BAY WINDOW

- A window space projecting outward from the main walls of a building and forming a bay in a room



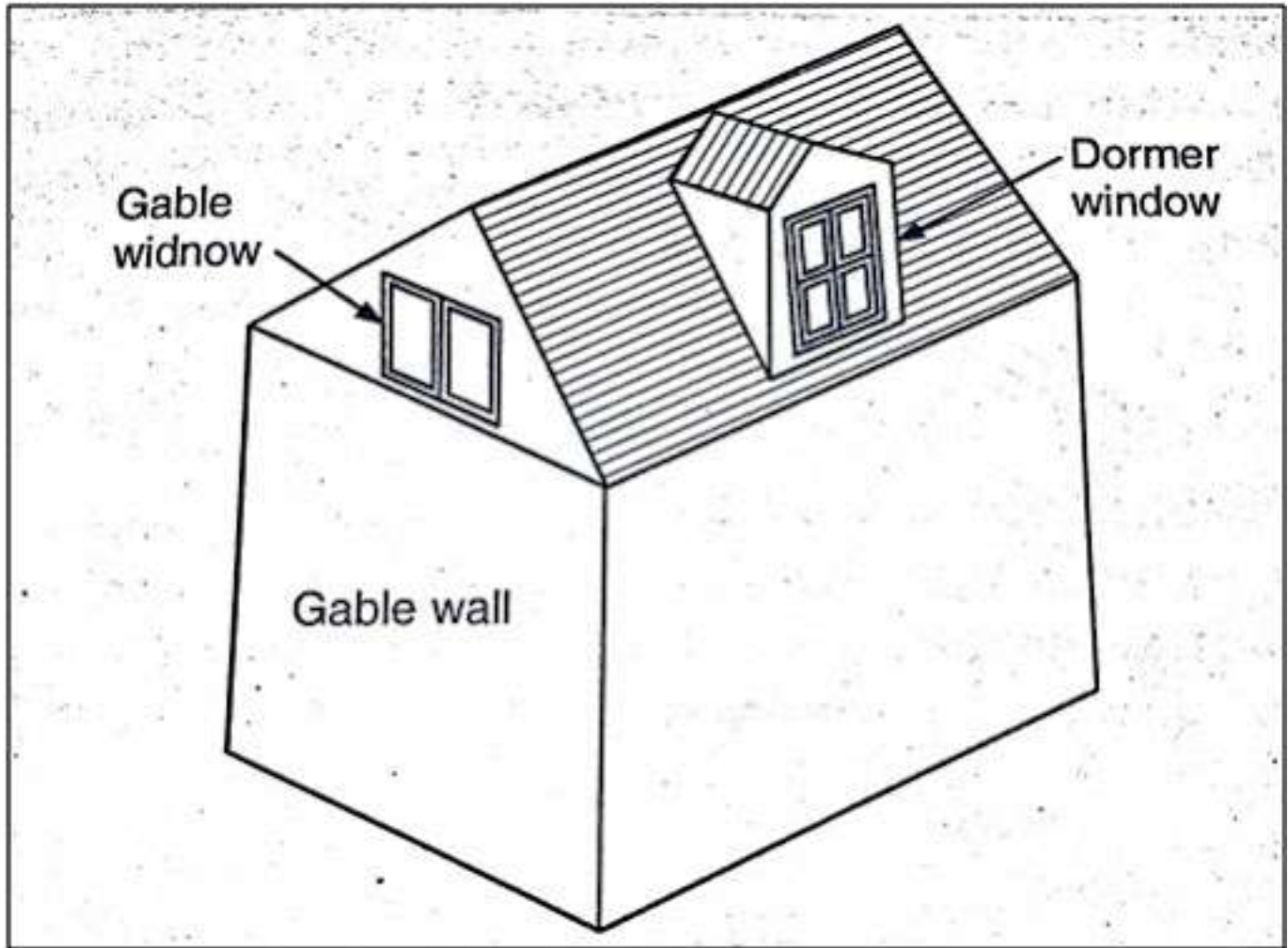


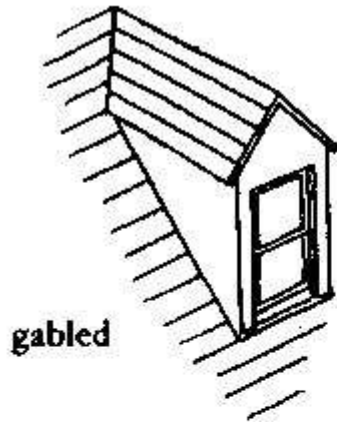
FRENCH WINDOW



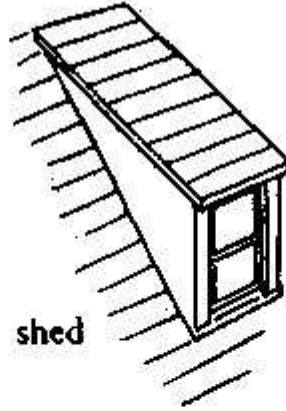
DORMER WINDOW



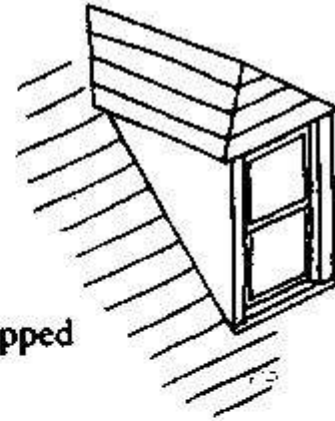




gabled

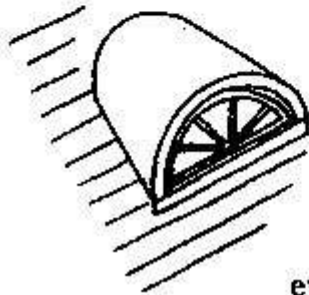


shed

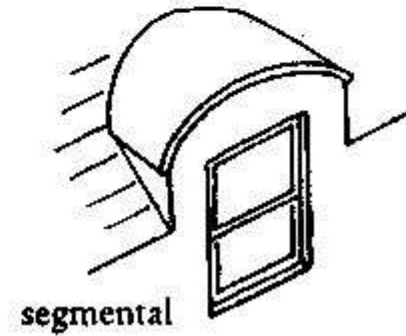
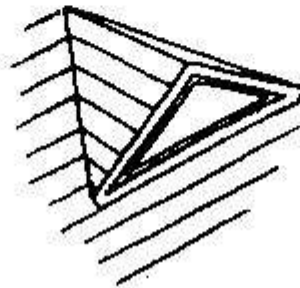


hipped

Types of Dormers



eyebrow



segmental

SKYLIGHT



UPVC WINDOW

- **UPVC**, also known as Unplasticized Polyvinyl Chloride, is a low-maintenance building material used as a substitute for painted wood, mostly for **window**



 **ROPO**



CRCA SHEETS/PRESSED STEEL

- **CRCA** is an abbreviation of “cold rolled close anneal”. This is a steel grade in which cold rolling is done after hot rolling and pickling, to reduce the thickness of steel



